

# SCB REGENERATIVE MEDICINE FOCUS AREAS



With hundreds of potentially lifesaving regenerative medicine products poised to move toward commercialization in the coming years, **standards are more critical than ever.**

SCB is dedicated to advancing and promoting the use of standards, but **we need additional community support** to respond to the interrelated challenges facing the regenerative medicine field:

- **Regenerative medicine is fast-paced and requires a rapid response**

Structured funding from partners (FDA, NIST, and ARMI | BioFabUSA) has been crucial to our success but only focuses on subsets of needs and priorities identified up to a year in advance.

- **Workers in regenerative medicine need vital training now to implement new standards**

Current funding is insufficient to support the level of education and training needed to help industry efficiently and effectively adopt and correctly use standards.

**Since SCB's inception in 2017, we have:**

- Accelerated the advancement of 34+ standards
- Broadened awareness of the value of standards
- Increased access to standards through the Regenerative Medicine Standards Portal

**Help us address the most critical issues inhibiting progress in regenerative medicine**

**Donate to an SCB Focus Area**

Suggested Contribution:\*

**\$50,000-  
\$100,000**

\*Donations are tax deductible to the extent of the law

# STANDARDS IMPLEMENTATION EDUCATION AND WORKFORCE DEVELOPMENT



## KEY CHALLENGE:

Standards can only benefit the community if there is broad understanding of how to implement them to meet regulatory expectations.

## FOCUS AREA SOLUTIONS:

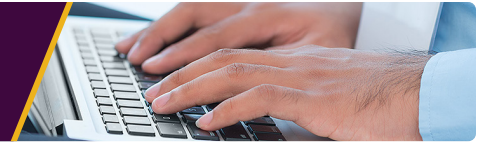
Develop courses on how to use specific regenerative medicine standards to demonstrate regulatory compliance, improve workforce performance, and improve the efficiency and repeatability of internal processes.

## STATUS:

Pending full funding



# DATA MANAGEMENT



## KEY CHALLENGE:

Variability in data management practices is a common pain point for treatment centers, manufacturers, and suppliers. The variance in data management practices and communication create opportunities for manufacturing error and overburden staff. This can result in limiting capacity to support clinical trials of potentially lifesaving therapies.

## FOCUS AREA SOLUTIONS:

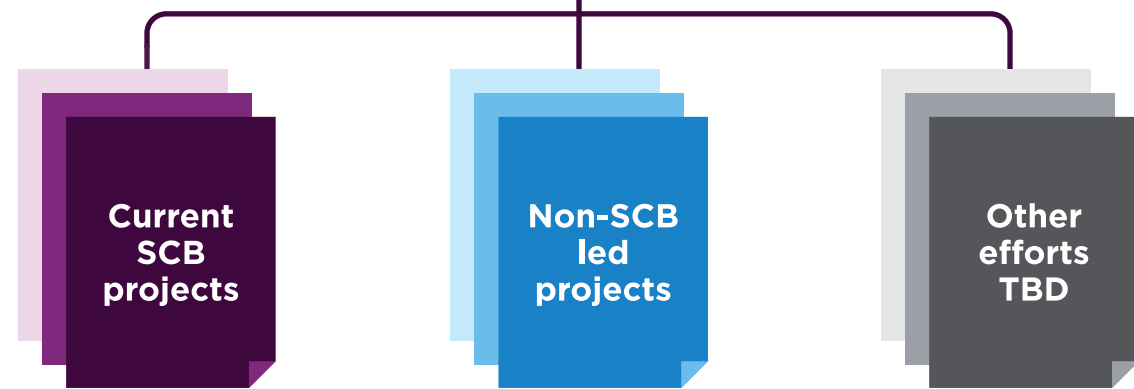
Identify common data needs and approaches to streamline data management practices.

## STATUS:

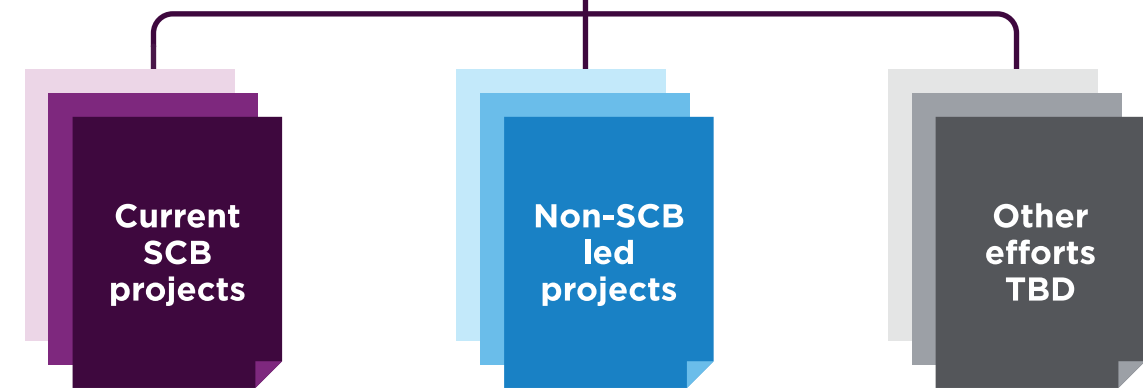
Pending full funding



## EDUCATION & WORKFORCE DEVELOPMENT



## DATA MANAGEMENT



# DONOR BENEFITS:



## Formal recognition of your contribution

- At SCB-hosted workshops and meetings
- On the SCB website
- In SCB publications (newsletter, social media)



## A seat on the Focus Area's Steering Committee

- Advise on opportunities within the focus area
- Provide input on workshops and meeting agendas
- Participate in course development for standards implementation support



## Focus Area reports or courses

- Help shape public reports about the Focus Area
- Discounted course registration for your employees

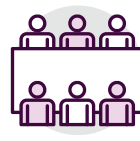
# SCB ACTIVITIES ENABLED BY YOUR DONATION

Depending on total funding received for each Focus Area, SCB will:



## Assess the Focus Area landscape in a publicly available report summarizing:

- Standards-related projects under way in the community
- Critical gaps in standards development or adoption
- Potential solutions



## Host quarterly public Focus Area meetings

- Discuss ongoing opportunities and challenges
- Share updates on Focus Area progress and achievements
- Publish meeting highlights in the SCB Newsletter



## Organize a public workshop

- Bring together stakeholders to discuss common Focus Area needs and challenges not being fully addressed by existing projects



## Act as a liaison for existing efforts

- Ensure harmonization across efforts led by different organizations



## Champion new projects

- Respond to gaps or opportunities identified by the community (e.g., feasibility studies, standards development, standards education)



## Develop relevant courses

- Improve understanding and implementation of specific standards in the Focus Area for leaders and employees

## HELP ACCELERATE THE REGENERATIVE MEDICINE FIELD

Your donation to support a Focus Area will help us rally the community to address the most critical issues limiting progress in regenerative medicine.

To donate or discuss donor opportunities, contact: Justin Barch, CAE  
SCB Executive Director  
301-455-0207 | [jbarch@regenmedscb.org](mailto:jbarch@regenmedscb.org)

## ABOUT SCB

The Standards Coordinating Body (SCB) is an independent non-profit organization focused on accelerated advancement and improved awareness of the standards and best practices that address the rapidly evolving needs of the global regenerative medicine advanced therapy community.



[standardscoordinatingbody.org/focus-areas](https://standardscoordinatingbody.org/focus-areas)